

DRIVE SHAFT REMOVAL/INSTALLATION

B3E031325500W03

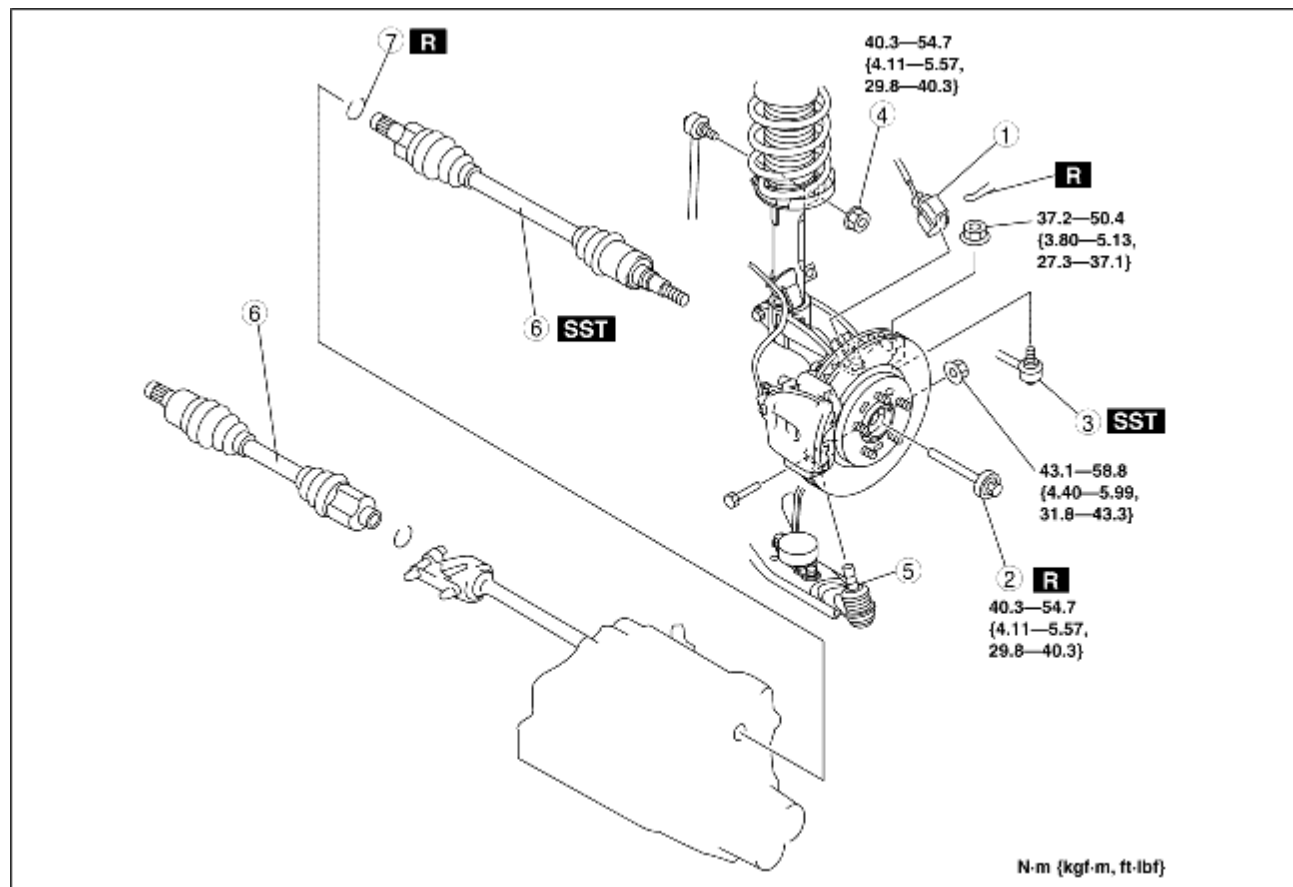
Caution

- Performing the following procedures without first removing the ABS wheel-speed sensor may possibly cause an open circuit in the wiring harness if it is pulled by mistake. Before performing the following procedures, disconnect the ABS wheel-speed sensor connector (axle side) and fix the wiring harness to an appropriate place where it will not be pulled by mistake while servicing the vehicle.

1. Drain the transaxle oil. (See [TRANSAXLE OIL REPLACEMENT \[F35M-R\]](#).) (See [AUTOMATIC TRANSAXLE FLUID \(ATF\) REPLACEMENT](#).)

2. Remove in the order indicated in the table.

3. Install in the reverse order of removal.



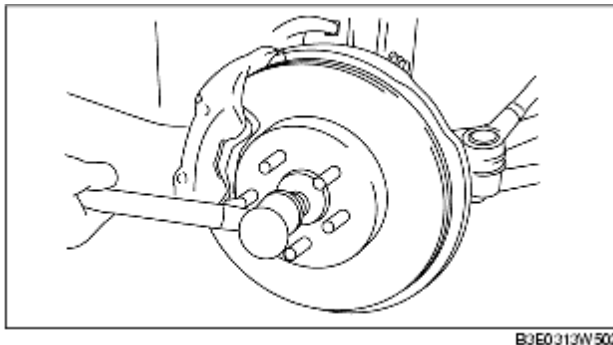
B3E0313W005

1	ABS wheel-speed sensor connector
2	Lockbolt
3	Tie-rod end ball joint (See FRONT CROSSMEMBER REMOVAL/INSTALLATION .)
4	Stabilizer control link upper nut

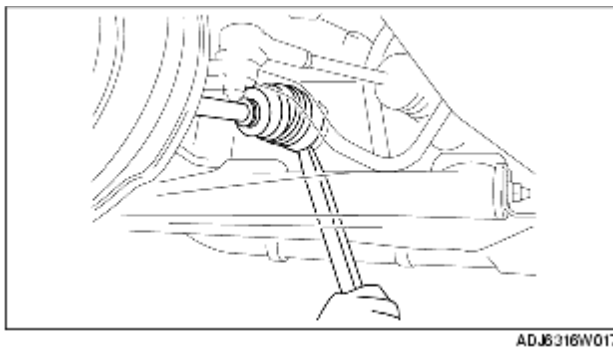
5	Front lower arm ball joint
6	Drive shaft (See Drive Shaft Removal Note.) (See Drive Shaft Installation Note.)
7	Clip (See Clip Installation Note.)

Drive Shaft Removal Note

1. Install a spare bolt onto the drive shaft.
2. Tap the bolt with a copper hammer and separate the drive shaft from the axle.



3. Separate the drive shaft from the wheel hub.
4. Separate the drive shaft (LH) from the transaxle by prying with a bar inserted between the outer ring and the transaxle.



Caution

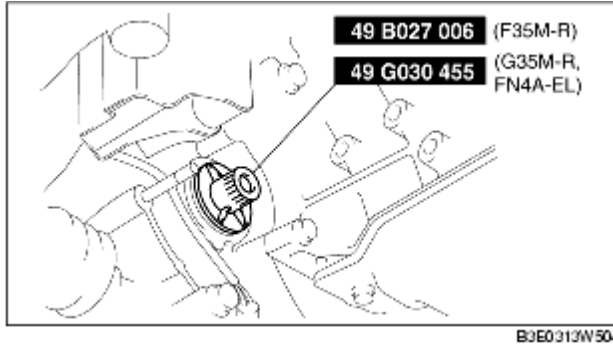
- Be careful not to damage the transaxle oil seal with the bar.

5. Disconnect the drive shaft (RH) from the joint shaft by tapping the transaxle side outer ring with a brass bar and hammer.

Caution

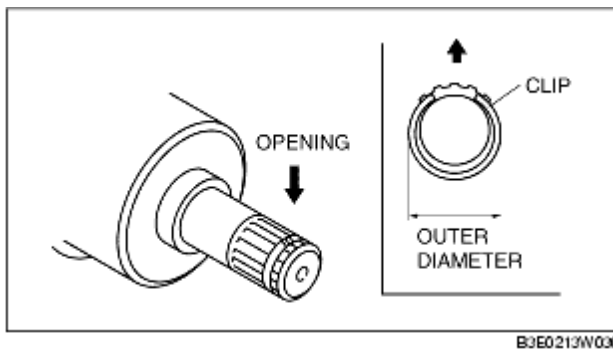
- The sharp edges of the drive shaft can slice or puncture the oil seal. Be careful when removing the drive shaft from the transaxle.

6. Install the **SSTs** to the transaxle after the drive shaft is removed.



Clip Installation Note

1. Install a new drive shaft clip to the clip groove at the end of the drive shaft with the clip opening facing upward and the clip width within the specification.



Standard

Z6 (ATX) and LF (ATX): 29.5 mm {1.16 in}
 Z6 (MTX) and ZJ: 27.5 mm {1.08 in}
 LF (MTX): 31.2 mm {1.23 in}

2. After installation, measure the outer diameter.

- If it exceeds the specification, repeat installation using a new clip.

Drive Shaft Installation Note

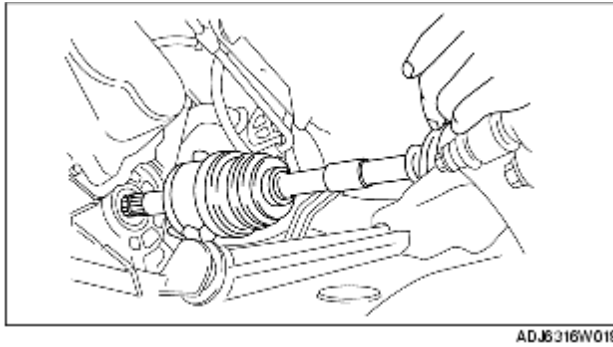
Left side

Caution

- The sharp edges of the drive shaft can slice or puncture the oil seal. Be careful when installing the drive shaft from the transaxle.

1. Insert the drive shaft into the wheel hub.
2. Apply transaxle oil to the oil seal lip.

3. Install the drive shaft to the transaxle.



4. After installation, pull the transaxle side outer ring forward to confirm that the drive shaft is securely held by the clip.

Right side

1. Install a new clip onto the joint shaft. (See [JOINT SHAFT REMOVAL/INSTALLATION](#).)
2. Insert the drive shaft to the wheel hub.
3. Insert the drive shaft to the joint shaft.
4. After installation, pull the transaxle side outer ring forward to confirm that the drive shaft is securely held by the clip.